

Caravan, RV and Ute

ROUND END
COMPRESSION LATCH

APPLICATION

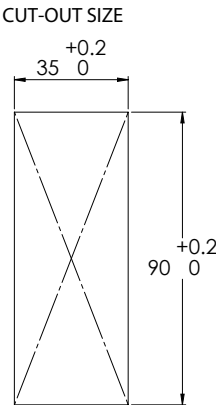
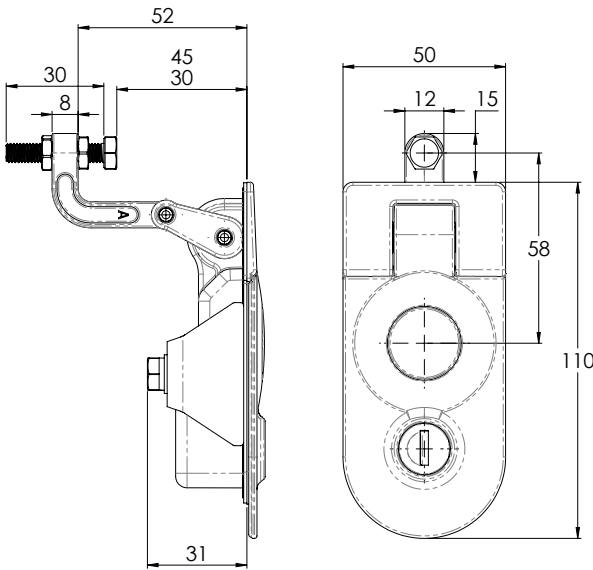
- Hatches on caravans and RVs
- Toolboxes on utes

FEATURES & SPECIFICATIONS

- Zinc construction
- Available in either black powder coat or bright chrome plating
- Exchange barrel (removed in unlocked position)
- Bolt adjustability range of 15mm
- Arm length of 52mm

KEYING

- Available for purchase with or without locking barrel
- Replacement barrel kits available for the Lock Focus One Key Solution
- Standard Lock Focus wafer exchange barrels
- Barrels feature dust covers to protect against water and dust ingress



DESCRIPTION	PRODUCT CODE
Bright chrome, barrel not incl.	I/2302/3
Black powder coat, barrel not incl.	I/2302/6